

Report to Community Safety Forum – 10 December 2012

Subject: Crime trends and performance in Brighton & Hove, Position up to October 2012

Contact Officer: Name: *Ruth Condon* Tel: 29-1103
E-mail: ruth.condon@brighton-hove.gov.uk

Wards Affected: All

1. SUMMARY AND POLICY CONTEXT:

- 1.1 This report describes recent activities and progress relating to priority areas in the [Brighton & Hove Community Safety, Crime Reduction and Drugs Strategy 2011-14](#). It also provides statistical updates relating to the first seven months of 2012/13, ie. April to October 2012.
- 1.2 Graphs showing monthly crime data from April 2008 to October 2012 are also provided. These set recent data in the context of both longer term trends and also seasonal crime cycles (where applicable).

2. RECOMMENDATIONS:

- (1) The Community Safety Forum notes the information provided in this report and is invited to:
 - i) Feedback on any developments from their community or organisation's experience which may help the understanding and interpretation of the data and trends contained in this report.
 - ii) Consider the potential for supporting crime reduction and community safety priorities within their own organisation or local community.

3. INFORMATION:

Total police recorded crime

- 3.1 Total crimes recorded by the police have declined year on year between 2004/5 and 2011/12. However, in the current year there are signs that this decline has levelled out. Until August a declining trend was still evident but have shown an upturn in the following two months data. Between April and October 2012 there were a total of 14,683 police recorded crimes, 345 crimes more than in the same months of 2011/12 (2.4% increase). Theft and handling offences which make up approaching half of all recorded crimes are strongly influencing the trend in total crimes. Other main crime groups are showing a mixed picture, as can be seen in other parts of this report.

Neighbourhoods and quality of life

- 3.2 In the first seven months of 2012/13 (Apr to Oct) the long term downward trend in criminal damage recorded by the police has continued, being 15% lower than in the same months of 2011/12. Partnership work with Surrey and Sussex Probation Trust around community payback continues to deliver environmental improvements across the city. Recent projects include painting to improve the appearance of community centre buildings and sheltered housing, and graffiti removal from a car park. There is now a dedicated budget for holding stock materials and this will enable the community payback scheme to respond even more quickly to projects.
- 3.3 The redeveloped Safe in the City website is due to be launched imminently (www.safeinthecity.info). One of the main aims is to make it more accessible for residents and to improve feedback and engagement with partnership work. It will involve the use of new social media, eg. Twitter, Facebook, etc. as well as incorporating videos about services.

Drugs Misuse

- 3.4 Interim data for the number of drug-related deaths show there have been 21 deaths between Jan and Sep 2012, which is roughly on a level with numbers last year and better than the number in the two previous years.
- 3.5 The fourth national UK Recovery Walk was held on 29th September in the city. This was aimed at bringing together recovery communities, organisations, groups and their supporters from across the UK to participate in a very public celebration of recovery from substance misuse addiction and to challenge the stigma and isolation associated with it. Over three thousand people were reported to have attended the walk. Following this event, work has begun to explore the feasibility of establishing a local multi-purpose facility in the city for people in recovery that would provide a base for mutual support, the development of skills and reintegration.

Reducing Offending

- 3.6 There is an increase in all acquisitive crimes (incl. theft/handling, burglary and robbery) of 8% in the first seven months of 2012/13 compared with the same months of 2011/12. The number recorded in the month of October is at its highest monthly level since 2007. However, for serious acquisitive crimes (burglary, vehicle crime and robbery) there continues to be a decrease (5% reduction compared with the first seven months of 2011/12, although the extent of the decrease has reduced from the position in previous reports). On the other hand the position has continued to worsen with the more numerous 'lower level' thefts, such as theft from person (up 39%) and shoplifting (up 6%). The number of recorded cycle thefts has decreased since a sharp peak in August, but numbers have remained relatively high for the time of year in the subsequent two months.
- 3.7 Integrated Offender Management (IOM) is the term used for the partnership work between a wide range of statutory and voluntary agencies who together seek to stop reoffending and tackle the underlying reasons behind the offending of those offenders of most concern. Engagement from partners with offenders takes place at a range of opportunities. An example of this includes the identification of offenders' health needs when they are arrested or appear at court, and addressing these needs

at an early stage to divert them from further offending. An area of work which is currently being developed is around providing support to offenders in the context of their families.

Alcohol Misuse and Alcohol-related Disorder

- 3.8 Alcohol-related hospital admissions were on an upwards trend from the beginning of 2010 until October 2011, but this trend appears to be reversing slightly over the last few months, with numbers recorded between April and July 2012 being 3.5% lower than in the same months of 2011.
- 3.9 At the last report to the Community Safety Forum the number of police recorded injury violence crimes was continuing to show a downward trend, but the last few months have seen a turnaround with numbers in the first seven months of 2012/13 now showing a slight increase (up 1.4%) compared with the same months in 2011/12, and against a 3% reduction target.
- 3.10 Development of 'The Bevy' community pub in Bevendean continues. Support from the Alcohol Programme Board to the project includes ensuring that Health Trainers operate out of the building so that community members can benefit from this service. They are also financing a film following the development of the project. Project proposals are to have both a bar and a café for those who do not drink, along with meeting rooms, a community kitchen, and a pub garden. Training opportunities in the kitchen, café and bar are also being explored. The idea is to create a hub for the community where the space can be used in a flexible way. The group is also keen to provide somewhere for teenagers, such as a milk / coffee bar. Albion in the Community are also involved, and the public health team hope to integrate various 'healthy' initiatives. The local police are being consulted on how best to address any potential behavioural issues.
- 3.11 Work by the Environmental Health Team is seeking to encourage cafés to extend opening hours so there are more options available for people to meet in the evening that are not focused on alcohol. Other work being undertaken includes initiatives to reduce illegal alcohol sales, and a pilot Alcohol Diversion Scheme where a course to outline key issues associated with the drinking behaviour of those arrested for alcohol-related reasons is offered in place of a penalty notice. Results from this pilot have been very encouraging.

Anti-Social Behaviour

- 3.12 Between Oct 2011 and Sep 2012 19% of the 1,537 people surveyed believed that one or more of 6 types of ASB (drug dealing/use; drunk/rowdy behaviour; vandalism/graffiti; litter/dog fouling; noisy neighbours; and teenagers hanging around) was a fairly big or very big problem. There has been a slight increase in this measure compared with the 12 months ending June 2012.
- 3.13 The dedicated anti-social behaviour and hate incident reporting system in place since May 2012 enables calls to be taken via the duty line (292735) or by email during 'working hours'. There have been 295 enquiries taken between May and the end of October, of which 186 were related to antisocial behaviour incidents and 64 to hate incidents. Of these enquiries 52 became cases for the Community Safety Casework Team.

- 3.14 The Community Trigger process allows local residents to request a review of anti-social behaviour problems to ensure that all appropriate steps are being taken to address the problem. This has been in place locally since May and the Community Trigger has been used 8 times between then and October. One of the learning points has been that services may have not clearly communicated to residents what can or cannot be done to resolve the anti-social behaviour issue in question.

Children, Young People and Families

- 3.15 The number of young people aged 10-17 entering the criminal justice system continues to decrease (38 between April and September 2012). However, the most recently available data (in the 12 months ending Dec 2010) show that there is more re-offending by young offenders in Brighton & Hove compared with most other local authority areas. There are plans to increase partnership working focussed on young reoffenders and to respond through a multi-agency response.
- 3.16 The number of young people who are attending A&E for reasons associated with alcohol misuse remains of concern. Socio-demographic data on these young people are being analysed and used so that prevention work can be targeted where it is most needed.
- 3.17 'Stronger Families, Stronger Communities' work continues to develop. Families are being identified through the use of a wide range of selection criteria, including those associated with substance misuse and offending, for support through this work programme.

Domestic Violence

- 3.18 Between April and October 2012 there have been 2,039 domestic violence crimes and incidents recorded on the police crime database, 76 (3.9%) more than in the same months of 2011. If this increase represents more people coming forward to report incidents of domestic violence, this is a positive result.
- 3.19 In the first six months of 2012/13 the police detected or solved 48% of domestic violence crimes. In this same period 65% of finalised court cases resulted in a positive outcome (mostly a conviction), which is an improvement from the position in the first three months, but lower than the 78% achieved in 2011/12.
- 3.20 The annual '16 Days' campaign to raise awareness of the local and global issue of violence against women is being supported in the city between 25th November and 10th December. Further details are available on the [Safe in the City website](#) and a leaflet has been produced which lists the events being programmed in the city over this period.

Sexual Offences

- 3.21 The number of police recorded serious sexual offences in the first six months of 2012/13 was 120, and this compares with 138 recorded in the same months in 2011/12, continuing the slight decrease seen last year. A reduction in actual crimes taking place is of course the aim, but with sexual offences often remaining unreported, we would wish to see the number of reports remaining steady or increasing, so these statistics point to the need to continue to maintain proactive work to encourage people to report. In the first six months of 2012/13 46 (92%) of

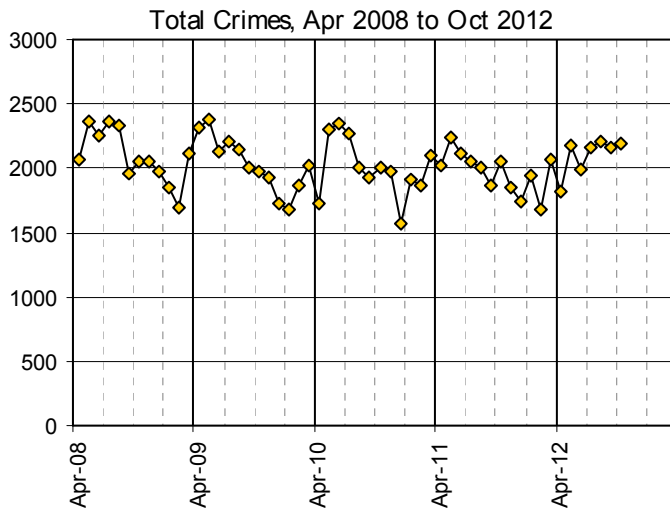
the 50 sexual offences which have reached the court stage have resulted in a successful outcome.

- 3.22 Data from different statutory and voluntary partner agencies who provide services to victims of sexual offences are being collated and analysed to look at the extent to which, having initially reported the incident, victims are accessing the support services that are available and what difference these services are making.

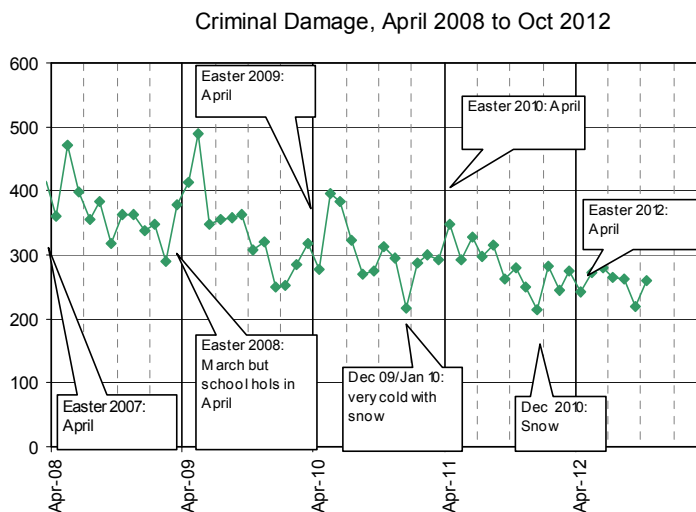
Hate Incidents and Crimes

- 3.23 The police recorded 98 **racist and religiously motivated incidents and crimes** in the first half of 2012/13 on their crime database, 34% more than in the same period in 2011/12. Of these, five were religiously motivated. The police made charges for 43 racist or religiously motivated crimes over this period. The percentage of prosecutions resulting in successful outcome (mostly a conviction) in the first six months of 2012/13 was 84% (32 out of 38 finalised prosecutions) slightly below the level of 89% achieved during 2011/12.
- 3.24 A subgroup of the Racial Harassment Forum (RHF) is, in conjunction with young BME pupils, planning to develop and pilot an anti-racist campaign in two schools to include challenging the use of racist language, increasing reporting and improving responses by schools. Opportunities for the RHF to engage with Police and Crime Commissioner candidates and with the elected commissioner have been taken forward.
- 3.25 In the first six months of 2012/13 there have been 41 **LGBT hate incidents and crimes** recorded by the police, compared with 36 in the same months in 2011/12. In this same period the police detected or solved 15 crimes with seven of these resulting in a charge. 14 out of 16 prosecutions finalised at court had a successful outcome.
- 3.26 Sussex Police have been reviewing their hate crime policy which lays out procedures around how they record and progress reports of (all types of) hate crime. When the policy has been finally agreed, there are plans for the implementation and impact of the policy to be reviewed by the LGBT Community Safety Forum.
- 3.27 The police have recorded seven **disability hate crimes** and no crime-related incidents on the crime database between Apr and Oct 2012; this compares with 3 recorded in the same months of 2011/12. There has been one finalised case at court and this had a successful outcome. There are plans to seek to improve understanding around issues of disability hate incidents on public transport through the Disability Hate Steering Group with information being fed in from various sources, including public transport providers, with a view to taking preventative action.

Crime trends up to October 2012 (monthly data)

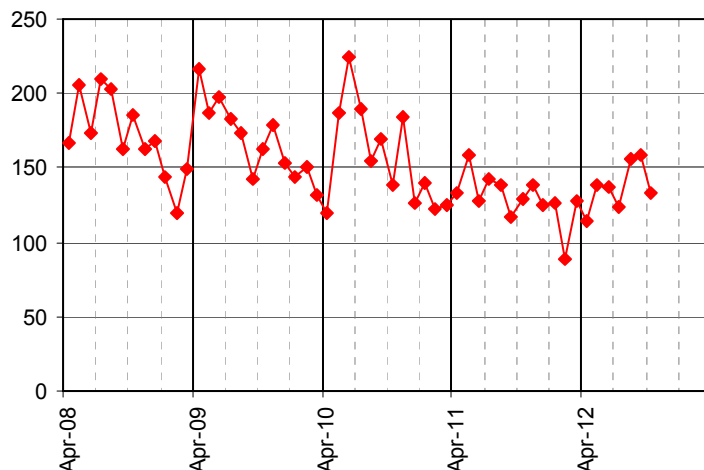


3.28 Total crimes have shown a year on year decline up to the end of 2011/12. While crimes in the first five months of 2012/13 remained fewer than in the same months of 2011/12, the decline which is usually seen during late summer has not happened this year. In the seven months up to October 2012 total crimes are now showing an increase compared with the same months in 2011.



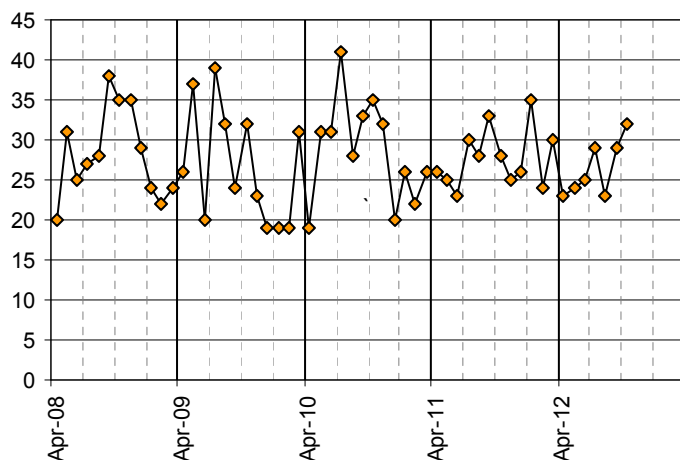
3.29 The long term downward trend in criminal damage continues.

All Injury Violence
Apr 2008 to Oct 2012



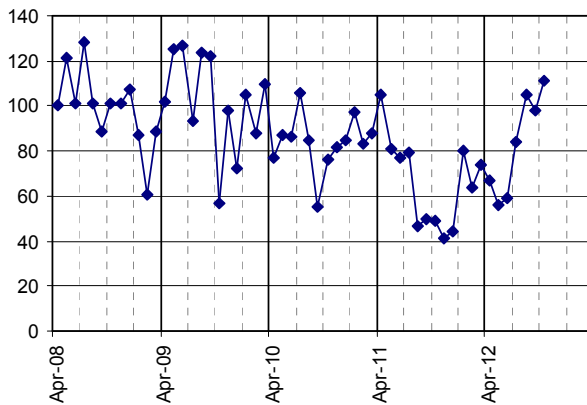
3.30 The number of injury violence crimes climbed up from a low point in February and continued on a rising trend until September.

Sexual Offences Apr 2008 - Oct 2012



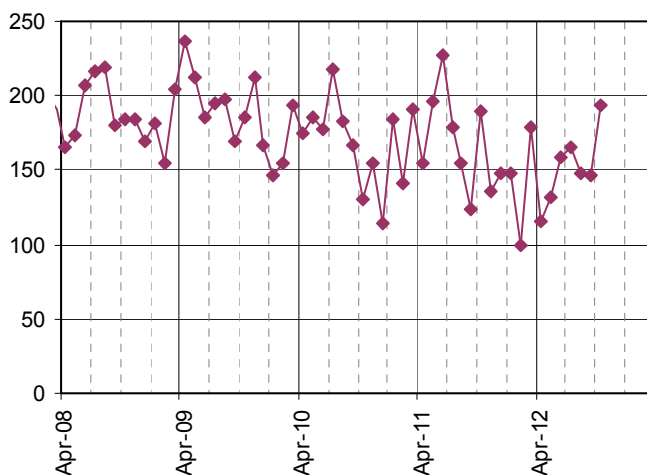
3.31 The number of police recorded sexual offences has remained between 20 and 35 per month over the last two years. Work continues to encourage reporting of incidents.

Domestic Burglary, Apr 2008 to Oct 2012



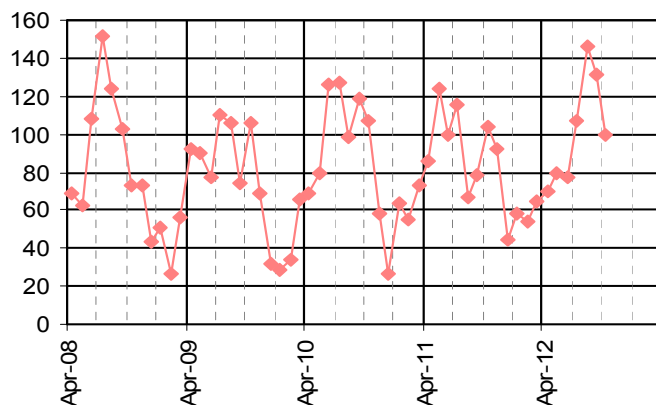
3.32 There was a long term declining trend in domestic burglaries, with numbers between August and December 2011 being particularly low (40-50 crimes per month). From January onwards the number has risen again with between 98 and 111 being recorded in each of the last three months.

Vehicle Crime, Apr 2008 to Oct 2012



3.33 Vehicle crimes have fluctuated over the past year, but the general trend is downwards. 100 crimes were recorded in February 2012 which is the lowest monthly number recorded for many years, while in October there were nearly 200. October saw a rise in both thefts from and thefts of a motor vehicle.

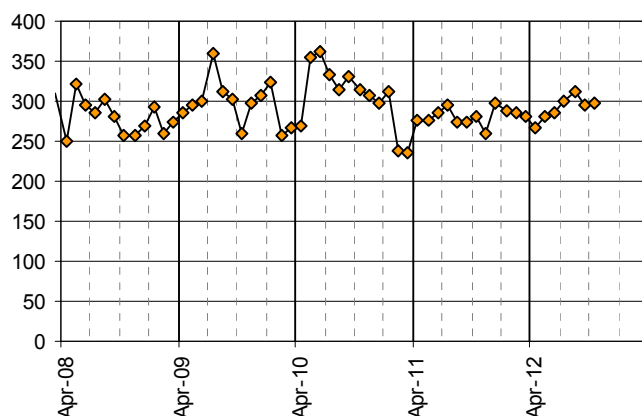
Theft of a Pedal Cycle,
Apr 2008 to Oct 2012



3.34 A seasonal pattern in cycle thefts continues and numbers rose over the summer months as more people cycle. However, there was a peak in the number of thefts in August and although numbers in September and October have dropped back, they remain higher than in the same months in previous years.

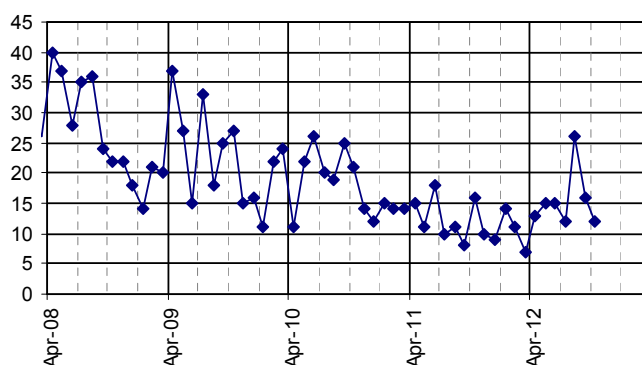
Police crime data presented in this report only reflect those crimes which are reported and recorded. There is likely to be a level of underreporting in many crime types. However, domestic violence and the hate crimes on this page may be particularly liable to underreporting.

Domestic Violence Crimes and Incidents
Apr 2008 - Oct 2012



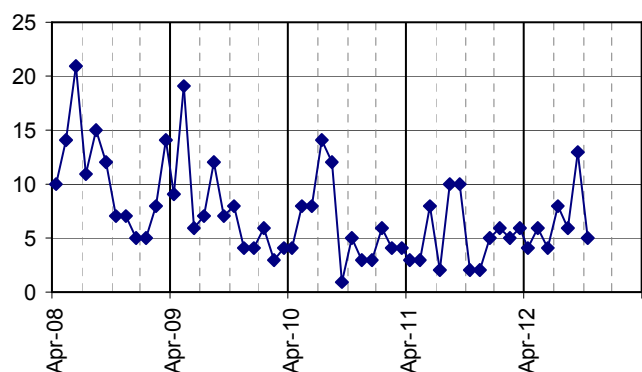
3.35 The number of domestic violence crimes and crime-related incidents recorded during 2011/12 has been between 250 and 300 each month. Monthly numbers have mostly remained within this range during the first 7 months of 2012/13.

Racist and Religiously Motivated Crimes and Incidents (police crime database),
Apr 2008 to Oct 2012



3.36 The long term declining trend in police recorded racist and religiously motivated incidents and crimes was stabilising at around 10 – 15 incidents per month during 2011/12. The month of August showed a spike up to 26 incidents, but the following two months reverted to a more typical level.

Homo/bi/transphobic crimes and crime-related Incidents (police crime database),
Apr 2008 to Oct 2012



3.37 The number of police-recorded homophobic, biphobic or transphobic crimes and crime-related incidents has been at ten or below since summer 2010, with the exception of the month of September when 13 were recorded.

Performance data for key crime types, position at end October 2012

Police recorded crimes	number of crimes Apr 11-Oct 11	number of crimes Apr 12-Oct 12	rank within 15 bench-marked CSPs ¹
Total Crimes	14338	14683	10
Criminal Damage	2127	1800	13
Injury Violence	946	959	8
Sexual Offences	193	185	n/a ²
Domestic Burglary	488	580	3
Theft from/of a Motor Vehicle	1223	1060	5
Theft and handling (excl. motor vehicle theft)	6657	7302	12
Pedal Cycle Theft	675	711	12
Police recorded crimes and crime-related incidents			
Domestic Violence Crimes and Incidents	1963	2039	n/a
Racist/Religiously motivated Crimes and Incidents	89	109	n/a
LGBT Hate Crimes and Incidents	38	46	n/a
Disability Hate Crimes and Incidents	3	6	n/a

¹ Brighton & Hove is matched for comparative purposes with 14 other Community Safety Partnerships (CSPs) according to a range of socio-demographic and geographic variables. A rank of 1 is the best; 15 is the worst; 8 is the middle position.

² Because sexual offences, DV and hate crimes are subject to underreporting and local work is being undertaken to increase reporting of these crimes, it is not appropriate to judge performance in comparison with other Community Safety Partnerships based on the number of police recorded crimes.